

Using The Kairos Manager For The First Time

If you have not done so yet, please install the Kairos Software on the server. For more information, read the document: "Installing The Kairos Software On The Server" (*Install 01 – kServer.pdf*)

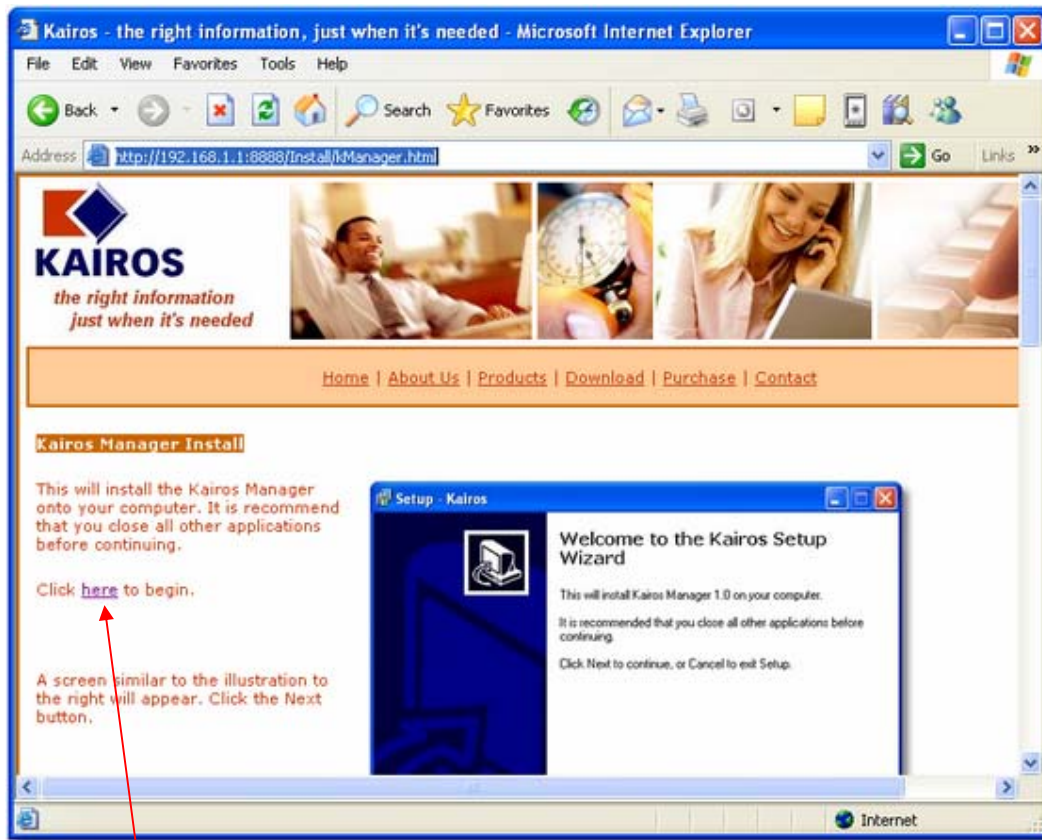
If you installed the Kairos Manager on the server computer, you can use it there. If you choose to do this, skip to the next page.

Alternatively, you can install the Kairos Manager on you own computer. To do this, follow these instructions:

- Start the web browser on your computer and enter the link, which consists of:
 - the server location (IP address or URL name)
 - the port (8888 - assuming the installation defaults have been used)
 - the installation page: /Install/kManager.html

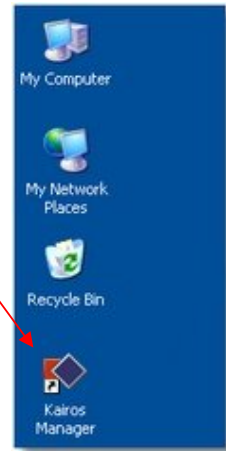
e.g. <http://192.168.1.1:8888/Install/kManager.html>

- The Kairos Manager Installation page will appear.



- Click the link to start kManagerSetup.
- The kManagerSetup application will appear. You will probably just accept the default responses to each screen. More information can be found by scrolling downwards through the installation web page (above).

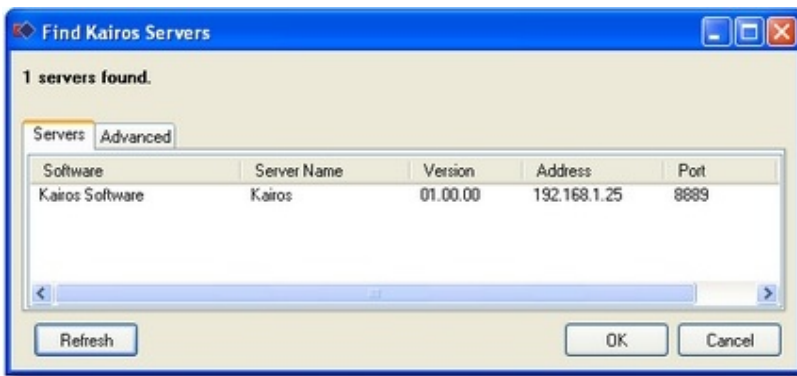
- After installation of the server software, the Kairos Manager icon will appear on the desktop. Double click the Kairos Manager icon.



- The following login dialog will appear:



- If the Server drop down box is empty, click the ellipses button to view the “Find Kairos Servers” dialog:



- Click on the server you wish to select and then click OK to continue.

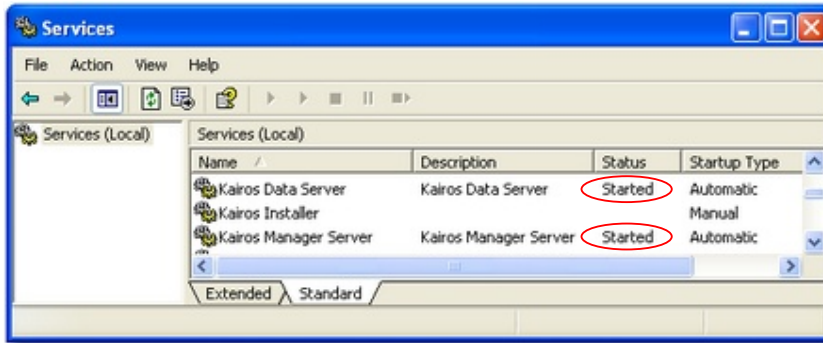


- Enter your username and password (the default password is your username – you can change this to something more secure later - read the document: “Kairos Administration Management” (*Config 01 – Admin Management.pdf*)).
- Click OK to continue.
- The Kairos Manager starts.

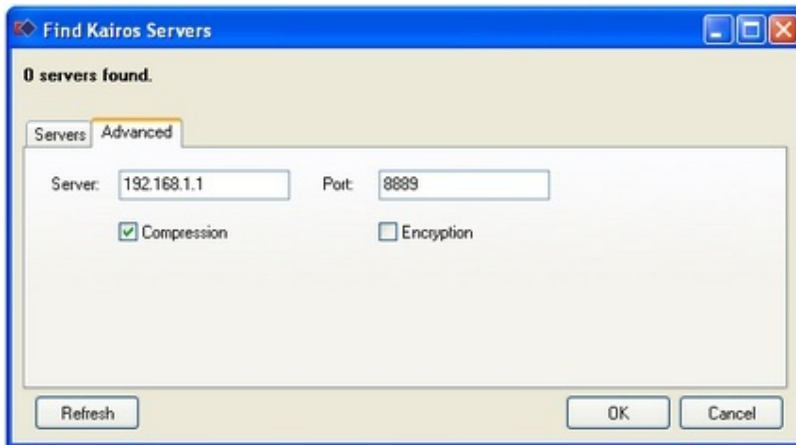
Problems Connecting?

If you have problems connecting, try the following:

1. Ensure the Kairos Data Server and Kairos Manager Server are running as services on the host computer



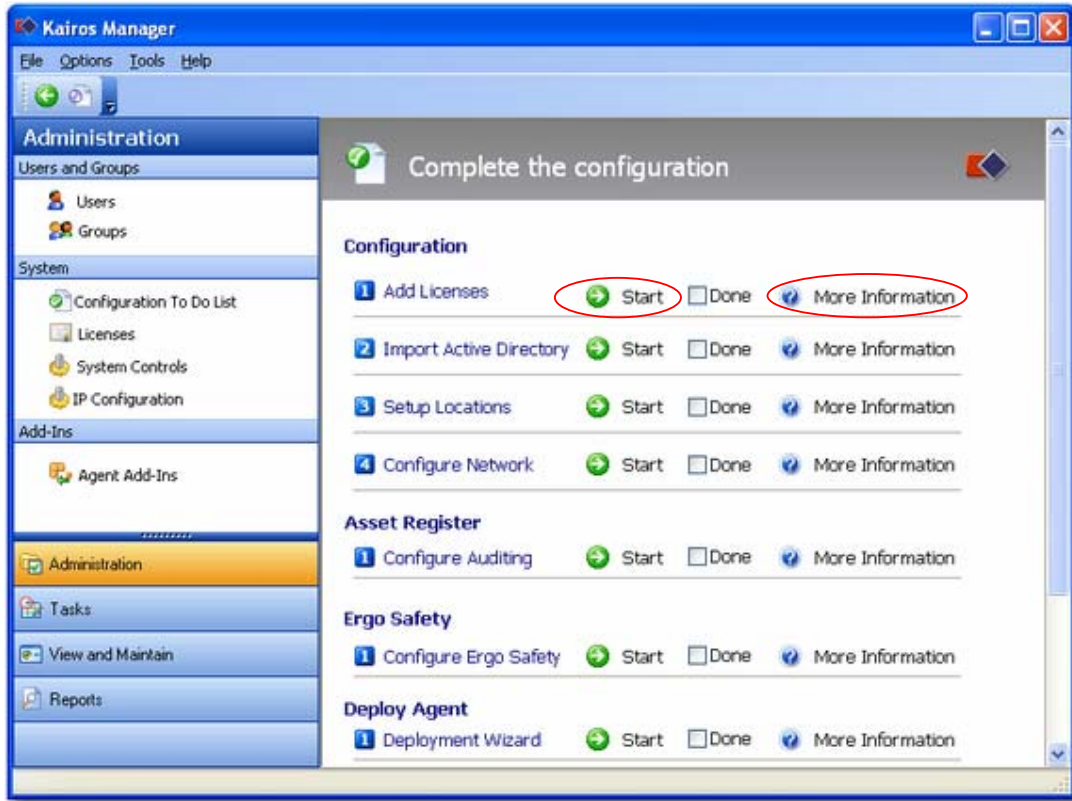
2. Ensure you have the correct settings for Data Compression and Data Encryption. By default Data Compression is ON and Data Encryption is OFF. If you changed these at installation, you must ensure your changes are applied to kManager also. To do this click the ellipses button to the right of the server drop down box on the "Connect To Kairos Manager" window. Click the Advanced tab of the "Find Kairos Servers" window that appears (see below). Make changes if necessary and then click OK.



3. Ensure you have the correct user name and password – and that you have been given permission to access kManager. (By default, passwords are not enforced and everyone has access to kManager until the first user is assigned a password from within kManager itself. After that, no one has permission to access kManager except those that have been granted explicit rights to do so.)

Note: To activate passwords (or add, modify or remove passwords), read the document: "Kairos Administration Management" (*Config 01 – Admin Management.pdf*).

- When kManager starts for the first time it will display the Setup ToDo List



- Work through each configuration wizard, starting with "Add Licenses". Before clicking "Start" to begin each wizard, first click the "More Information" link to ensure you understand the purpose of each the wizard and have gathered any prerequisite information necessary to complete the procedure.

Further Reading:

- "Deploying The Kairos Agent Throughout The Organisation" (*Install 04 - kManager.pdf*).
- "Kairos Administration Management" (*Config 01 - Admin Management.pdf*).